

CREATING YOUR ACCOUNT

Go to <http://nativeaccent.carnegiespeech.com>

Set up a new account by clicking "Create New Account"

Create your own Username* and Password. Record on this sheet

Your Username

Your Password

Carefully type in the Validation Code

Address Labels

Complete the registration form and click "Create My New Account"

Check your email for registration confirmation link. Click on embedded link at the bottom of the page. If you do not find the email, check you junk mail filter.

Go back to <http://nativeaccent.carnegiespeech.com> and sign in.

Select your assigned

CLASS NAME

and class KEY CODE

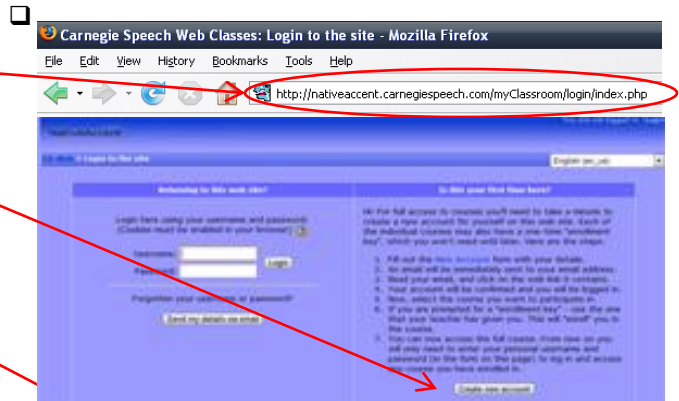
Go to and complete the settings and tutorial detailed on the **Microphone Instruction Sheet** on before taking the assessment.

THE ASSESSMENT

Click on the link under the heading YOUR COURSES on the main menu.

Click on the linked Topic **Assessment**. First time users—refer to Tutorial Instructions on the following page.

Begin your Assessment by clicking the record button and speak the focus sentence into the microphone. Make sure that the levels are in the "green zone". If needed, adjust the microphone level by moving the microphone closer or farther away from your mouth. Complete the Assessment by recording all 30 sentences. You have two opportunities to record each sentence.



Create a new username and password to log in with:

Username:

Password:

Please enter the validation code you received when you paid to access this site:

Validation code:

Please supply some information about yourself:
(Note: your email address must be a real one)

Email address:

Email (again):

First name:

Surname:

Gender:

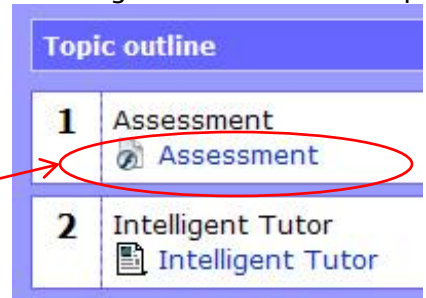
Native language:

City/town:

Country:

THE INTELLIGENT TUTOR

Select the Intelligent Tutor from the topic outline

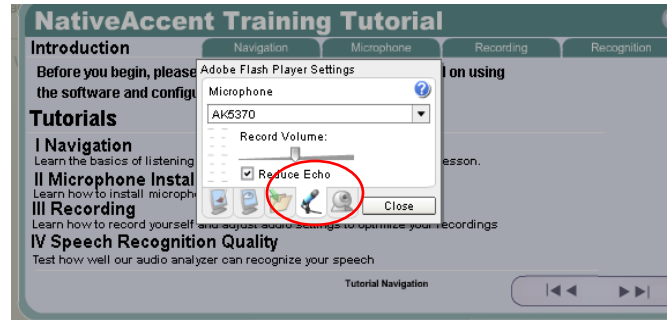
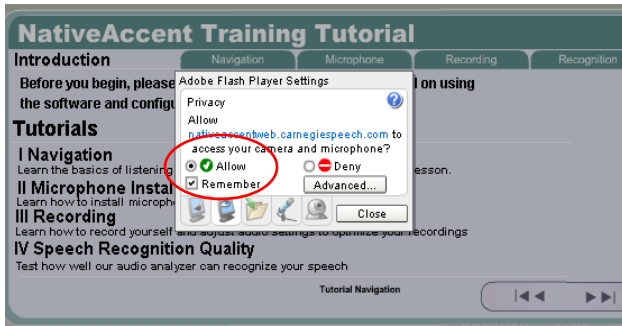


- Each lesson is designed to take about 15 minutes.
- If you leave a lesson for a short period, there is no need to log out or submit your results. The system will only track your actual instructional and practice time.
- Click the **Submit** button at the end of your lesson or session. You can either log out, or proceed to the next lesson.
- Upon returning to Native Accent, you can identify the next lesson by the bookmark.

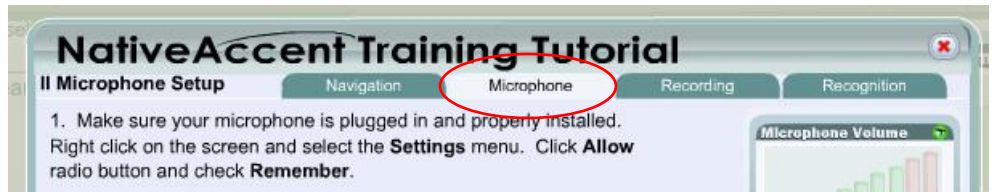
Microphone Instruction Sheet

Tutorial

- The first time you click on **Assessment**, an Adobe Flash Player Settings box will open. Please click "Allow" and "Remember" to enable the microphone to operate with Flash. Adjust microphone volume level so that meter stays in the green and click "Close"



Use the menu tabs and arrow buttons in the NativeAccent Training Tutorial to learn about lesson navigation and set microphone recording levels.



The Microphone recording tutorial is very important to generating good recordings in the assessment and in the following exercises. Make sure that the levels are in the "green zone". Adjust the microphone recording level by moving the microphone closer to or farther from your mouth. Typically this means 2 fingers away from the mouth and slightly below or to the side (to eliminate the "wind" sounds from being recorded).

If this does not produce acceptable results (the meter registering in the "green zone" when speaking normally), right click anywhere in the Flash window and click on the microphone icon in the Adobe Flash Player Settings (shown in the above illustration), and adjust the levels there. You may also have check the settings in Sounds and Audio Devices.

- Once you complete the tutorial, Click on the linked Topic **Assessment**.
- Begin your Assessment by clicking the record button and speak the focus sentence into the microphone. Make sure that the levels are in the "green zone".

REMEMBER - At the beginning of each training session, you should check your microphone levels. After opening your lesson, click on "Show Tutorial". Complete the steps described in the "Microphone" and "Recording" tabs.